

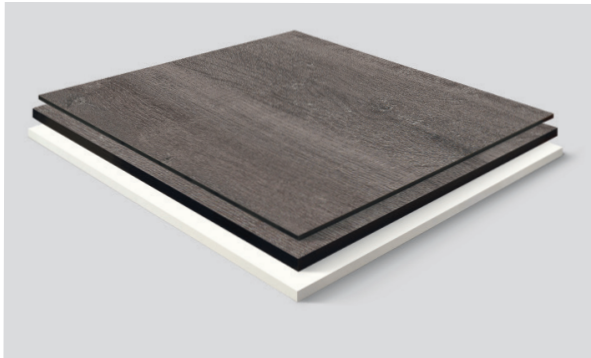


RAMPA®

Good idea. Let's make it!

HPL/COMPACT PANELS

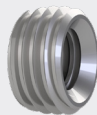
Strong connections for duroplastics using of HPL/compact panels example



Secure hold. Ideal for:

- ⇒ Furniture construction
- ⇒ Wet rooms / washbasins
- ⇒ Countertops
- ⇒ Facades
- ⇒ Interior construction

RAMPA®-Inserts Type: E



- For panels with a minimum thickness of 6 mm
- High load capacity, despite small installation place
- Small edge distances
- Standard cutter/drill can be used
- Chip-free assembling
- High variety of materials, also in stainless steel

RAMPA®-Inserts Type: BAS



- For materials with high strength/density
- Also for thin-walled applications
- Conical hub
- Cutting holes
- Chip-free assembling
- High variety of materials, also in stainless steel

The following product types can be used for HPL/compact panels as well: ES, BAN, BAV, ESK, ESD

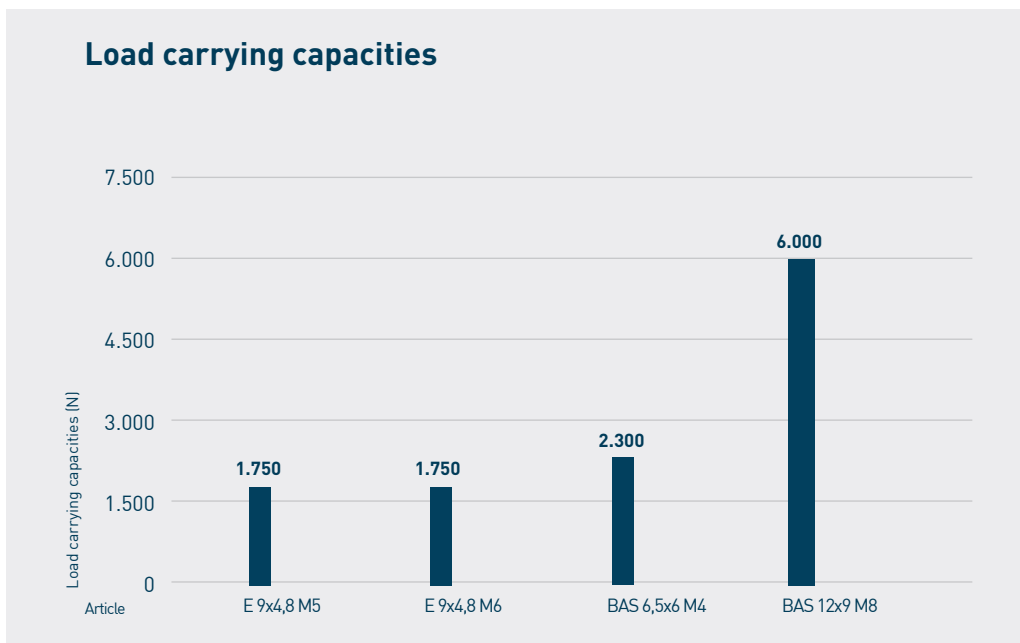


HPL/COMPACT PANELS

Strong connections for duroplastics using of HPL/compact panels example

	E (HPL)	BAS
High processing speed	+	-
Separate drive for assembling	-	-
Disassembly possible	-	-
Stainless steel in standard assortment	+	+
Material compaction through displacement	+	0
Low tension assembling	+	++
For thin-walled components	+	++
Chipless mounting	++	++
Stock goods	++	++
Fully automated assembling	+	+

Legend: ++ Very strong, + Strong, - Weak, 0 Not present



* The reference load-carrying capacities mentioned before might vary in individual cases due to different mechanical properties depending on the material used.



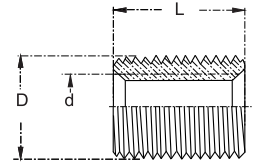
RAMPA®

Good idea. Let's make it!

HPL/COMPACT PANELS

The suitable inserts for HPL/compact panels

RAMPA®-Inserts | Type: E



Art. No.	Outer-Ø D (mm)	Length L (mm)	Threadsize d (mm)	Panel thickness	Pre-drill-Ø (mm)	Steel blue zinc-plated	Stainless steel 1.4305
008509__	9	4,8	M5	6	8,5	✓	✓
008605__	9	4,8	M6	6	8,5	✓	✓

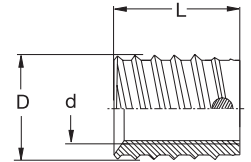
↑ Please complete

001	03
-----	----

*We hereby inform you according to Article 33 - REACH, that this article contains the following substance identified as SVHC:
Lead (Pb); CAS: 7439-92-1 Date of Admission: 27.06.2018

Recommended RAMPA® assembling tools:

Driver | Type 515
Hexagonal shank
Art. No. 51550401
Art. No. 51560401



RAMPA®-Inserts | Type: BAS

Art. No.	Outer-Ø D (mm)	Length L (mm)	Threadsize d (mm)	Pre-drill-Ø (mm)	Steel hardened blue zinc-plated	Stainless steel 1.4305
016406__	6,5	6	M4	6	✓	✓
016809__	12	9	M8	11,1	✓	✓

↑ Please complete

061	03
-----	----

*We hereby inform you according to Article 33 - REACH, that this article contains the following substance identified as SVHC:
Lead (Pb); CAS: 7439-92-1 Date of Admission: 27.06.2018

Recommended RAMPA® assembling tools:

Driver | Type 515
Hexagonal shank
Art. No. 51540001
Art. No. 51580001

